

Soluciones de los ejercicios para practicar

A.1 Cualitativa, continua, cualitativa, cualitativa, cualitativa, discreta.

A.2 Discreta, cualitativa, discreta, continua, continua, discreta.

A.3 Discreta, continua, discreta, cualitativa, discreta, continua.

B.4

| Nº de cambios de domicilio | f | h | F | H |
|----------------------------|----|------|----|------|
| 0 | 5 | 0,17 | 5 | 0,17 |
| 1 | 1 | 0,03 | 6 | 0,21 |
| 2 | 4 | 0,14 | 10 | 0,34 |
| 3 | 7 | 0,24 | 17 | 0,59 |
| 4 | 5 | 0,17 | 22 | 0,76 |
| 5 | 1 | 0,03 | 23 | 0,79 |
| | 23 | | | |

B.5

| Nº de hermanos | f | h | F | H |
|----------------|----|------|----|------|
| 0 | 2 | 0,07 | 2 | 0,07 |
| 1 | 8 | 0,28 | 10 | 0,34 |
| 2 | 2 | 0,07 | 12 | 0,41 |
| 3 | 5 | 0,17 | 17 | 0,59 |
| 4 | 3 | 0,1 | 20 | 0,69 |
| | 20 | | | |

B.6

| Nº de dormitorios | f | h | F | H |
|-------------------|----|------|----|------|
| 0 | 5 | 0,17 | 5 | 0,17 |
| 1 | 6 | 0,21 | 11 | 0,38 |
| 2 | 2 | 0,07 | 13 | 0,45 |
| 3 | 9 | 0,31 | 22 | 0,76 |
| 4 | 5 | 0,17 | 27 | 0,93 |
| 5 | 1 | 0,03 | 28 | 0,97 |
| | 28 | | | |

B.7

| Nº de faltas de ortografía | f | h | F | H |
|----------------------------|----|------|----|------|
| 0 | 7 | 0,23 | 7 | 0,23 |
| 1 | 4 | 0,13 | 11 | 0,37 |
| 2 | 3 | 0,1 | 14 | 0,47 |
| 3 | 2 | 0,07 | 16 | 0,53 |
| 4 | 4 | 0,13 | 20 | 0,67 |
| 5 | 6 | 0,2 | 26 | 0,87 |
| 6 | 4 | 0,13 | 30 | 1 |
| | 30 | | | |

C.8

| Actividades tiempo libre | f | h |
|--------------------------|----|------|
| Deporte | 4 | 0,14 |
| Amigos | 4 | 0,14 |
| Idiomas | 4 | 0,14 |
| Baile | 2 | 0,07 |
| Cine | 2 | 0,07 |
| Música | 4 | 0,14 |
| | 20 | |

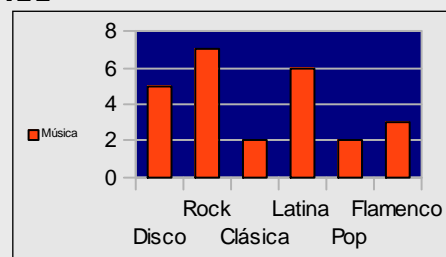
C.9

| Sabor preferido | f | h |
|-----------------|----|------|
| Naranja | 6 | 0,21 |
| Cola | 8 | 0,28 |
| Limón | 3 | 0,1 |
| Piña | 1 | 0,03 |
| Melocotón | 1 | 0,03 |
| Manzana | 3 | 0,1 |
| | 22 | |

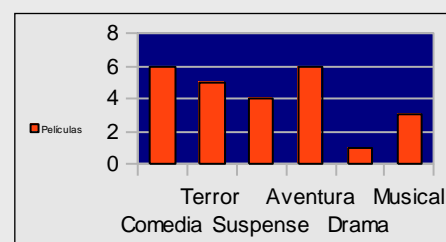
| Programa de televisión | f | h |
|------------------------|----|------|
| Ficción | 5 | 0,17 |
| Infantiles | 3 | 0,1 |
| Deportivos | 4 | 0,14 |
| Espectáculo | 4 | 0,14 |
| Documentales | 2 | 0,07 |
| Culturales | 2 | 0,07 |
| | 20 | |

C.10

D.11

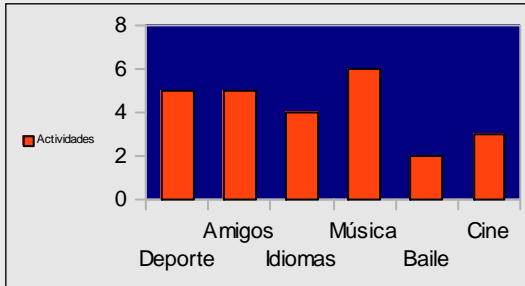


D.12

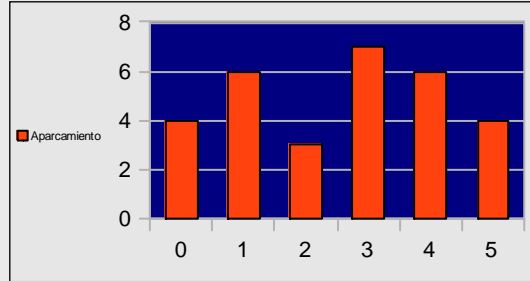


Estadística.

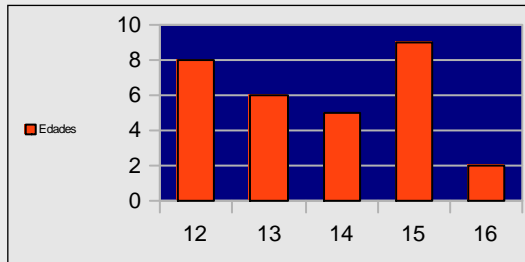
D.13



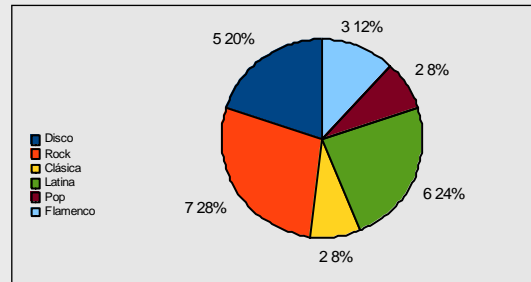
D.17



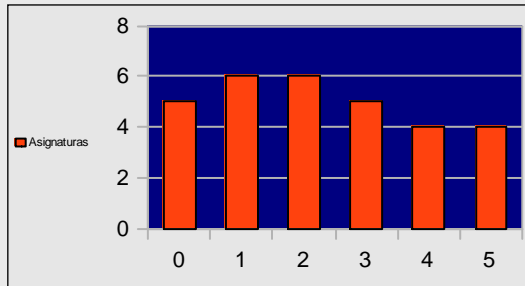
D.14



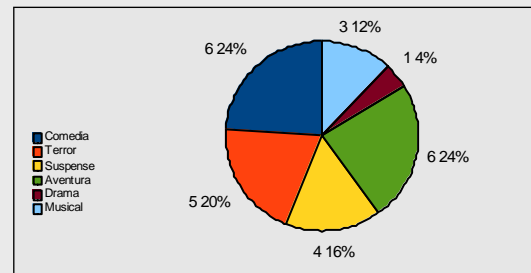
E.11



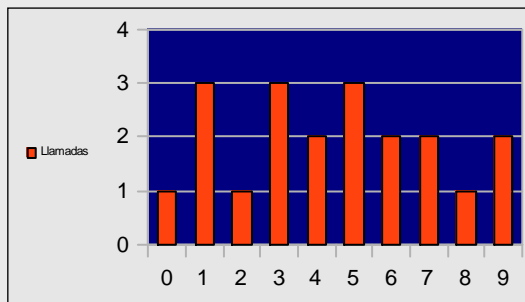
D.15



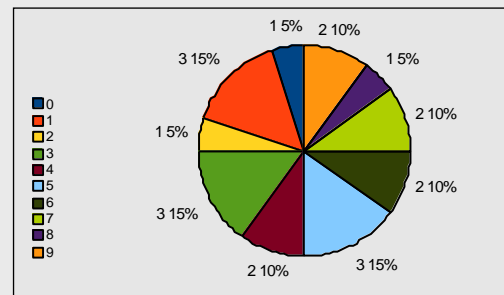
E.12



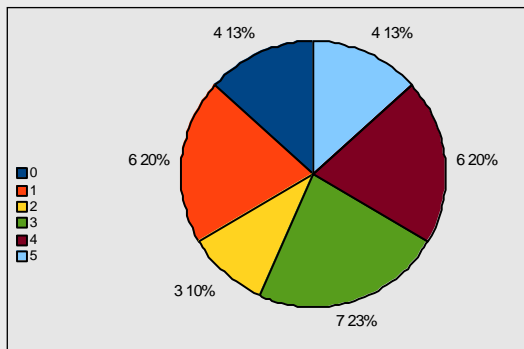
D.16



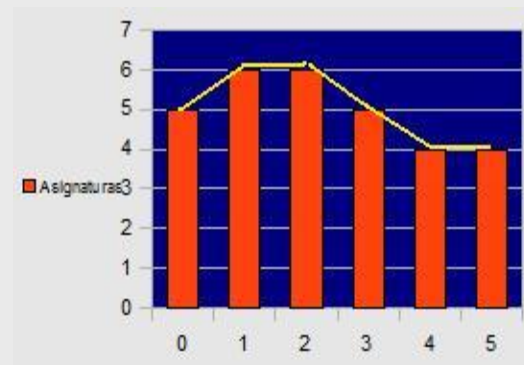
E.16



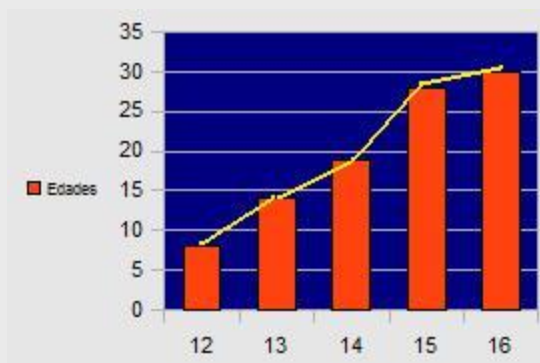
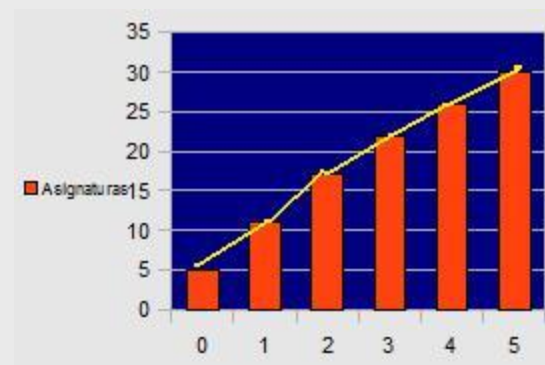
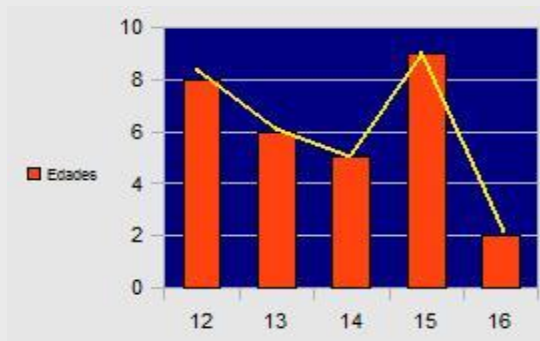
E.17



G.15



G.14



G.6

Media = 2,21
 Mediana = 3
 Moda = 3

G.7

Media = 2,86
 Mediana = 3
 Moda = 0

Soluciones AUTOEVALUACIÓN

1. $6'33$
2. $2'3$
3. $5'8$
4. $8'94$
5. 22
6. 38
7. 120°
8. La mediana
9. 14
10. Cualitativa